

# Impressions Venetian Blinds

## Fitting & Operating Instructions

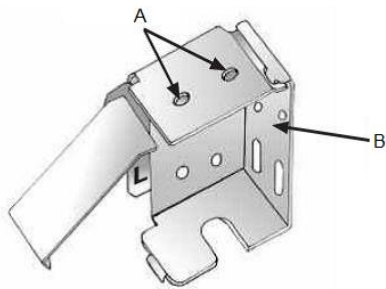
READ THESE INSTRUCTIONS CAREFULLY BEFORE INSTALLING THIS BLIND.

Note: The Installation of this product can be completed by non-professionals.

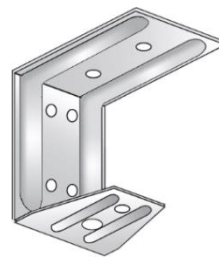
Your venetian blind is fitted in three simple stages. Please complete them in the correct order when installing your blind. Blind headrails should not be installed less than 1.5m from the floor.

### 1. Fit the installation brackets

Extend the hinged door on each box end bracket. You can identify the left and right bracket by locating the letters LH for Left Hand and RH for Right Hand on the inside of each bracket. Box end brackets can be used to Top Fix (A) or Face Fix (B) your blind. Position the bracket to the required fixing height and mark the two holes accordingly to how you wish to fix the blind. Intermediate brackets will be supplied on blinds that are over 1000mm wide. These will need to be spaced evenly along the headrail making sure that they do not interfere with the bearing brackets.



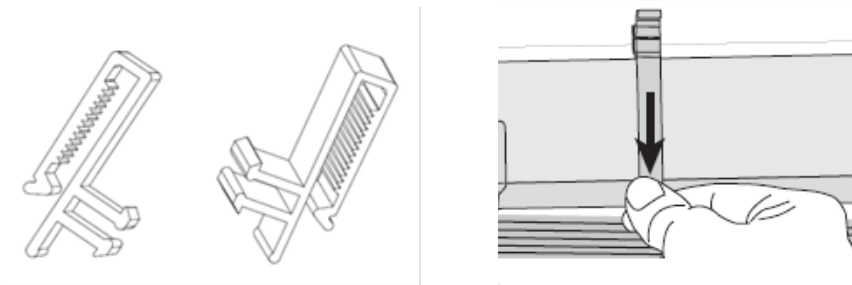
**Box End Bracket**



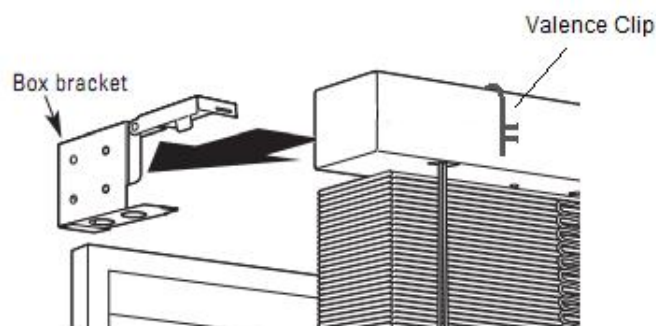
**Intermediate Bracket**

### 2. Attach the Impressions Venetian Blind and Valance

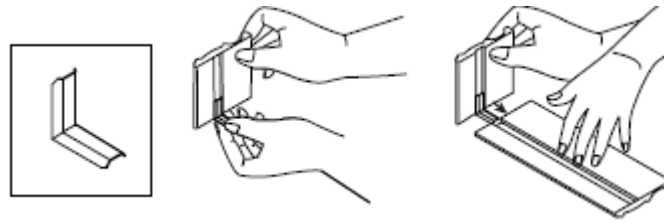
Attach the valance clips to the front of the headrail (please space evenly)



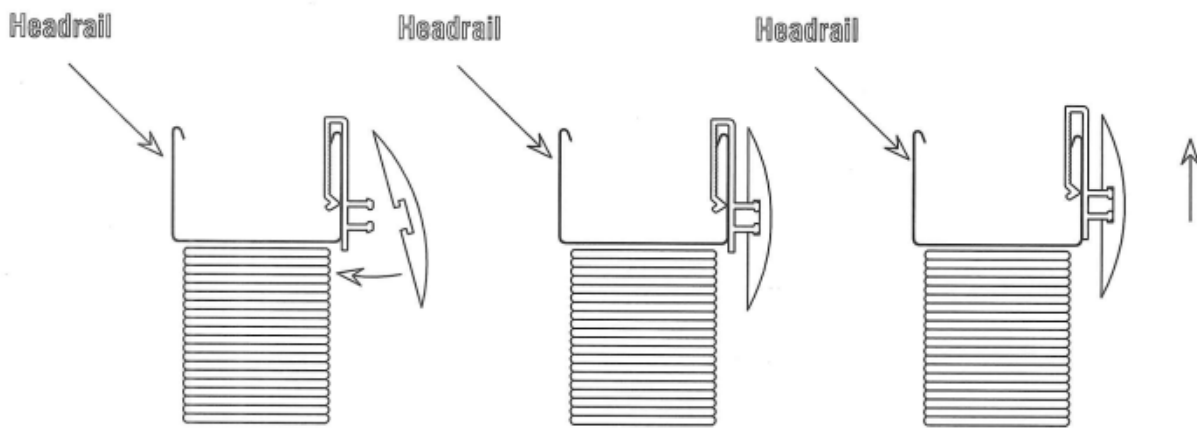
Once the brackets are fitted and the valance clips have been attached to the headrail, slide the blind into the brackets making sure that the raise and lower cord lock is facing you. Push down and snap shut the hinge doors to lock the headrail into position



If you have selected a mitred valance, these can be attached by sliding the 'L' shape plastic bracket into the groove on the back of the valance and the back of the mitred return as shown below.



The valance clip is designed to be adjustable so that you can install it at various heights. This enables you to fit the valance as close to the recess as you desire. Please move the valance clips to the desired height then secure the valance. Place the valance on to the top prongs of the valance clips, press downwards to locate bottom prongs and push back towards the headrail to snap the valance into position.



### 3. Install the cord accumulation device

**WARNING:** Children can strangle if this safety device is not installed. Always use this device to keep cords out of the reach of children.

The cord accumulation device shall be installed as close to the headrail as possible and, in all cases, not less than 1500mm from the floor. The accumulation device is a two part cord cleat. To fit, place the top part of the cleat in the desired position and mark the position of the hole with a pencil. Repeat the process for the second part of the cleat. The distance between the two part cord accumulation device is dependent on the drop of the blind, please see below for distance. Use the screws provided to attach the device to the wall. Always wrap the cords around the cleats in a figure of 8 as shown below when then blind is not in use.

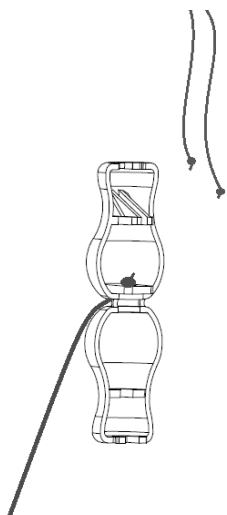


Up to 1000mm – 100mm  
 1001mm – 2000mm – 150mm  
 2001mm – 3000mm – 300mm

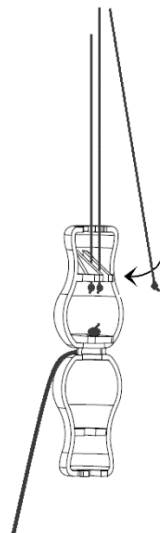


All Blinds will be fitted with a child safety cord condenser as standard, this will eliminate hazardous loops. Please see below for details on how to re-cord the safety device if it should break open.

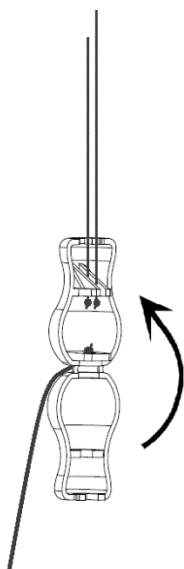
Child Safety Device breaks open



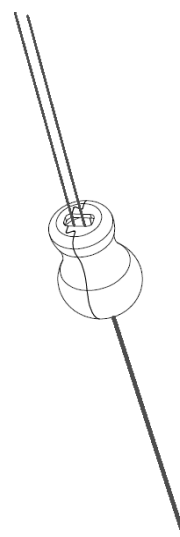
Re-Cord Device as shown



Close the device with cords inside



Complete and ready for use



## Operating your blind

### **To lower your blind**

Pull the raise and lower cords towards the centre of the blind and release gently through your hand until the required drop is reached. Lock the cords by pulling the cords to the outside of the blind to engage the cord lock.

### **To raise your blind**

With the slats fully open, pull cords downwards until the desired height is reached. To lock the blind into position, pull the cords to the outside of the blind.

Never raise the blind when the slats are in a closed position.

## Maintenance

The slats may be kept free of dust etc with an occasional wipe with a dry cloth.

## Child Safety

It is important that your Venetian Blind has the required Child Safety device installed. If you have any questions regarding the safety of your blind, please contact your retailer or installer.

**Note to installer:** Please ensure a general shield safety warning tag is fitted on the product.

